

## ABOUT THE INSTITUTE

K.L.N. College of Engineering has been the first self-financing co-educational Engineering College started in Madurai in 1994. The College has been affiliated to Anna University and approved by All India Council for Technical Education (AICTE). The College is located in the south eastern outskirts of Madurai and is 11Km away from Madurai city. The college runs 7 undergraduate engineering programs and 7 Master Programs including M.E. Communication Systems.

## DEPARTMENT OF ECE

The Department of ECE was started in 1994. The Department has adequate infrastructure with spacious classrooms, conference halls and well developed nine laboratories having the advanced designing tools like MATLAB, Orcad P-Spice, Xilinx, Mentor Graphics, IE3D, ADS, AnSoft, LabView and modernized equipments like spectrum analyzer, network analyzer, microwave power meter, GPS kit. The department initiates the U.G., P.G. & research projects in Embedded Systems through the Centre for Embedded Systems which is based on the collaboration of institution & Embedded industry. The department library has over 1500 books and magazines and journals. AICTE, New Delhi has sanctioned fund as under MODROB scheme for modernizing Microwave Lab and DSP lab of this department.



## OBJECTIVES OF THE WORKSHOP

### THEORY SESSION:-

- Introduction to VLSI Design Flow
- Front-end Design Flow with Xilinx System Edition & Mentor Graphics tools
- Basics of FPGA, Overview of Xilinx & Altera Products & its Architectural overview
- Back-end Design Flow with Mentor Graphics tools
- Discussion on Academic syllabus EC 2357 – VLSI Design Laboratory for U.G. students

### DEMONSTRATION & HANDS-ON SESSION:-

- Simulation using Xilinx ISE & Mentor Graphics' Questa Sim
- Synthesis using Xilinx Plan Ahead tool & Mentor Graphics' Precision RTL Plus
- Data Configuration in Xilinx & Altera FPGAs
- CMOS Inverter design using Mentor Graphics' tools
- Schematic Entry and SPICE simulation of MOS differential amplifier

### CORRESPONDENCE:

- 1) Mr.N.Janakiraman (Mobile: 98944 24665)  
E-Mail: janakiramanforu@yahoo.com  
Associate Professor
- 2) Mr.D.Anand (Mobile: 80982 60007)  
E-Mail: anand.duraiswamy@gmail.com  
Assistant Professor

Department of ECE  
K.L.N. College of Engineering  
Pottapalayam – 630 611. Madurai, Tamilnadu

## Two-Day Workshop on “VLSI Design Laboratory”

09-01-2015 & 10-01-2015  
(Friday & Saturday)

### REGISTRATION FORM

Name :

Qualification :

Designation :

Experience :

Department :

Organization :

Address for :

Communication

Phone No. :

Mobile No. :

E-mail id :

Accommodation required : Yes  No

Date:

Signature of the Applicant

## ACCOMMODATION

No TA / DA will be paid to the participants. On prior request, accommodation can be arranged in our college hostel with breakfast & dinner at a nominal fee.

## WHO CAN REGISTER?

The programme is open for all college faculty members, industrial persons, research scholars and students. Application can be downloaded from the website [www.klnce.edu](http://www.klnce.edu)

## REGISTRATION FEE INCLUDES

- 1) Course Kit
- 2) Course Materials (including Lab Manual)
- 3) Participation Certificate
- 4) Working Lunch, Tea & Snacks

## REGISTRATION FEE

- 1) Delegates from Academic Institution and Industry Rs.500/-
- 2) Research Scholars/Students Rs.400/-

The registration fee should be paid through Demand Draft drawn in favour of "THE PRINCIPAL, K.L.N. COLLEGE OF ENGINEERING" payable at Madurai.

## LOCAL TRANSPORTATION

Our college buses are plying on daily over 35 routes from various parts of city. Participants can use these buses to reach K.L.N.C.E. For further information please contact coordinators.

## IMPORTANT DATES

Registration form along with D.D should reach us on or before 6<sup>th</sup> January 2015. Limited spot registration only be allowed.

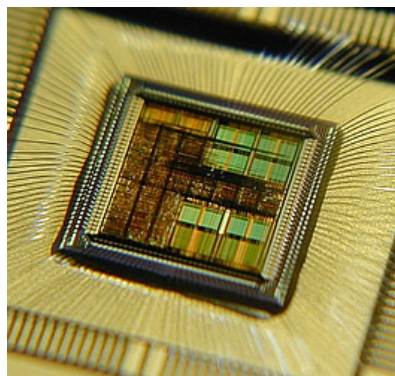
## PROGRAM SCHEDULE

### DAY-1:-

- 09:00 - 09:30 – Registration  
09:30 - 09:45 – Inauguration  
09:45 - 10:30 – Presentation on VLSI FPGA Design Flow  
10:30 - 10:45 – Tea Break  
10:45 - 12:45 – Presentation & Demonstration on Xilinx Tools – ISE Simulator, Plan Ahead Synthesizer, Logic Analyzer & FPGA Configurations  
12:45 - 01:30 – Lunch Break  
01:30 - 03:00 – Hands on - 8 bit Adders & 4 bit Multipliers - ISE Simulator & Plan Ahead Synthesizer  
03:00 - 03:40 – Hands on - Decoders & Multiplexers – Logic Analyzer & FPGA Configurations

### DAY-2:-

- 09:10 - 09:45 – Presentation on VLSI ASIC Design Flow  
09:45 - 10:30 – Presentation on Mentor Graphics' Front-end & Back-end Tools  
10:30 - 10:45 – Tea Break  
10:45 - 11:45 – Demonstration on CMOS Inverter design using Mentor Graphics' tools  
11:45 - 12:45 – Hands on - Mentor Graphics' Tools  
12:45 - 01:30 – Lunch Break  
01:30 - 03:25 – Hands on - Schematic Entry and SPICE simulation of MOS differential amplifier  
03:25 - 03:45 – Feedback and Conclusion



## Two-Day Workshop on "VLSI Design Laboratory"

09-01-2015 & 10-01-2015  
(Friday & Saturday)

**Chairman**  
**Dr.A.V.Ramprasad, Principal**

**Convener & H.O.D - ECE**  
**Dr.V.Kejalakshmi**

**Coordinators**  
**Mr.N.Janakiraman**  
**Mr.D.Anand**



**Organized by**  
**Department of Electronics & Communication Engineering**

**K.L.N.COLLEGE OF ENGINEERING**

Pottapalayam - 630 611

Sivagangai District.

Phone: 0452 2090971, 2090972

Fax: 0452 2698280

URL : [www.klnce.edu](http://www.klnce.edu)