

## COURSE COVERAGE

- \* Modeling of manufacturing environment
- \* Reduce investment risks by early proof of Concept and planning of new production facilities
- \* Cut inventory and throughput time
- \* Maximize use of manufacturing resources
- \* Improve line design and sequence
- \* Identification of bottlenecks and spare capacity
- \* 3D animation of the Factory Model
- \* Simulation Models of lean concepts

## COURSE DETAILS

Duration : 2 Days (4<sup>th</sup> & 5<sup>th</sup> Feb 2010)

Timings : 9.30am - 5.00pm

Venue : Seminar Hall

Department of Mechanical Engineering  
K.L.N. College of Engineering

## Registration fees:

Enclosed registration forms are to be submitted along with registration fee by DD in favour of "The Principal, K.L.N. College of Engineering" payable at Madurai.

Delegates from industry : Rs. 500/-

Delegates from Educational

Institutions : Rs. 400/-

Student Delegates : Rs. 200/-

## For further details please contact:

### G.R.Kathiresan

Assistant Professor  
Dept. of Mechanical Engineering  
K.L.N. College of Engineering  
Pottapalayam - 630 611.  
E-mail: grkathiresan@gmail.com

### Dr.A.N.Balaji

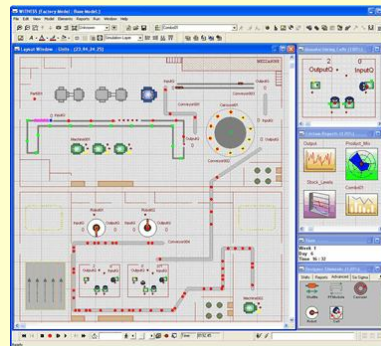
Assistant Professor  
Dept. of Mechanical Engineering  
K.L.N. College of Engineering  
Pottapalayam - 630 611.  
E-mail: balajime@yahoo.com

## About WITNESS

WITNESS is the unique program for simulation of manufacturing systems and virtual factories. WITNESS is recognized as the world's leading business simulation software (independent analysts ARC March 99). Over the past decade, more than 6000 organizations worldwide have used the tool to make better business decisions and ultimately improve profitability.

From the evaluation of the impact of adding a new product line, to re-engineering the processes of your entire business, WITNESS gives you the power to model your working environment and simulate the implications of different business decisions. As a result, you can always be confident that you have found the best business solution for your organization-before making a financial commitment to change.

Simulation solutions coupled with other features such as Optimization, and 3D visualization help connect data to processes to deliver key metrics or KPIs for a more balanced approach to business.



## Two-Day Workshop

on

## MODELING AND SIMULATION OF MANUFACTURING SYSTEMS USING WITNESS

04-02-2010 & 05-02-2010

Convener

**Dr.S.Ganapathy, Principal**

Co-convener

**Dr.A.Asha, HOD - Mechanical**

Coordinators

**Mr.G.R.Kathiresan**

**Dr.A.N.Balaji**



Organised by

**Department of Mechanical Engineering**

(Accredited by NBA, New Delhi)

**K.L.N.COLLEGE OF ENGINEERING**

Pottapalayam - 630 611

Sivagangai District.

Phone: 0452 2090971, 2090972

Fax: 0452 2698280

URL : [www.klnce.edu](http://www.klnce.edu)

&

**India Soft Technologies (P) Ltd**

Pune 411001

Phone: 91-020-65002395

<http://www.indiasoft.co.in>

## **K.L.N. COLLEGE OF ENGINEERING**

K.L.N. College of Engineering is the first self-financing Co-educational Engineering college in Madurai, started in 1994 by Munificence of philanthropist and well wishers in Sourashtra Community, which is a linguistic minority in Tamil Nadu. This college is sponsored by the committee of eminent industrialist and academicians led by enthusiastic, educationalist and industrialist Amaran Thiru. K.L.N. Krishnan.

The courses offered in K.L.N.C.E are approved by All India Council for Technical Education, New Delhi. It is an ISO 9001:2008 certified Institution and affiliated to Anna University, Tiruchirappalli. K.L.N.C.E offers Seven Undergraduate Programmes, Five Postgraduate Programmes and Doctoral Programmes in Engineering and Sciences.

### **ABOUT THE DEPARTMENT**

The Department of Mechanical Engineering is well equipped with qualified and experienced faculty members with research and industrial background. The Department offers B.E degree course in Mechanical Engineering and M.E degree course in CAD/CAM.

The Department is accredited by National Board of Accreditation (NBA), New Delhi. About 20 technical papers have been published by the department faculty in various National and International journals and Conferences during the last academic year.

Four faculty members of the Department are recognized as supervisors for guiding the scholars leading to Ph.D. & MS Research programme under Anna University.

The department has excellent infrastructure facilities like CAD/CAM Lab including a CNC Trainer Lathe and Milling, CNC Lathe, Wire cut EDM, 6 axis Robot and DRO Milling Machine. Software like AutoCAD, ANSYS, Pro-E, Solid Edge, Labview, Edge CAM and Witness are available along with state of art computers. Other Laboratories include Metrology lab, SM Lab, Mechatronics Lab, HMT Lab, IC Engine Lab, Steam Lab and FM lab. The Department has excellent Library facilities having more than 5000 books.

### **INDIA SOFT TECHNOLOGIES (P) LTD**

IndiaSoft Technologies (P) Ltd (ISTPL) is a Pune based applied math software solution provider, having branch offices at major cities Chennai, Mumbai, Delhi & Bangalore.

IndiaSoft is the sole representatives & implementation partner for the WITNESS range of products in India. They won SIMENS as a valuable customer in India and have executed more than 100 WITNESS based projects for several organizations, including AVTEC, Bajaj Auto, SKF, Dura valve India, Varroc Group, IndoSchottle, L&T, Mahindra & Mahindra, MICO-BOSCH, Triton, Endurance Technologies, Aurangabad Electricals, Kalyani Lemmerz, TACO, 3M, IFB LTD, SCL Chennai, JKM-DAERIM, Godrej- Chennai etc. to name a few.

Considering future need of expertise from industry they have taken initiative and tied up with premier institutes like IITs, Anna Univ, NITIE, IISc, IIMs, NITs, PSG & KLNCE. Most of them have implemented WITNESS and included it in the core subject viz. operations management & advanced manufacturing technology.

## **Two-Day Workshop on MODELING AND SIMULATION OF MANUFACTURING SYSTEMS USING WITNESS**

**04 - 02 - 2010 & 05 - 02 - 2010**

### **REGISTRATION FORM**

Name : .....  
(in Block Letters)

Qualification : .....

Designation : .....

Department : .....

Organization : .....

Address for : .....

Communication : .....

(with PIN code) .....

Phone : .....

Mobile : .....

E-mail : .....

Registration Category: Industry / Academic / Student

DD No. : Dated:

Bank :

Amount :

Accommodation required : Yes  No

(Accommodation on Payment basis)

Date: Signature of the Participant